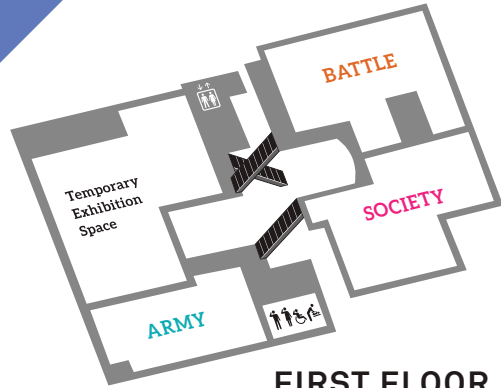
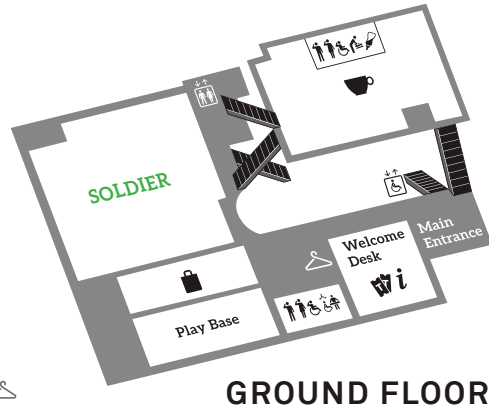


You can visit the galleries in this trail in any order



UPPER LEVEL
BATTLE
SOCIETY

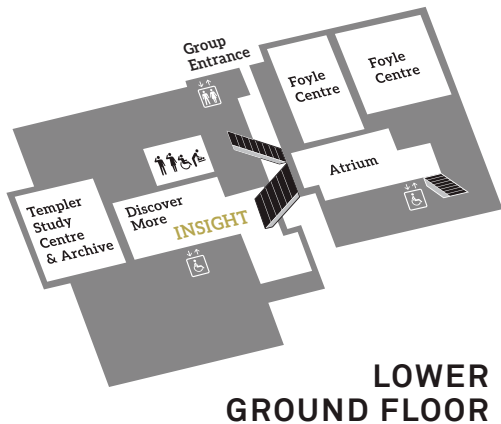
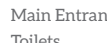
LOWER LEVEL
ARMY
 Temporary Exhibition Space
 Toilets



UPPER LEVEL
 Café
 Toilets



LOWER LEVEL
SOLDIER
 Play Base
 Shop
 Welcome Desk
 Main Entrance
 Toilets



UPPER LEVEL
 Atrium
 Foyle Centre
 Group Entrance

LOWER LEVEL
INSIGHT
 Discover More
 Templer Study Centre & Archive
 Toilets



nam.ac.uk



NATIONAL ARMY MUSEUM

LEARNING

What was life really like for a soldier in the First World War?



A SOLDIER'S LIFE

KEY STAGE **2**

SCHOOLS TRAIL

A SOLDIER'S LIFE

What was life really like for many of the soldiers who fought in the First World War? Find out by following this trail to find some amazing objects and learn the fascinating stories they can tell us.

This trail takes you to five different galleries in the Museum and you can visit them in any order.



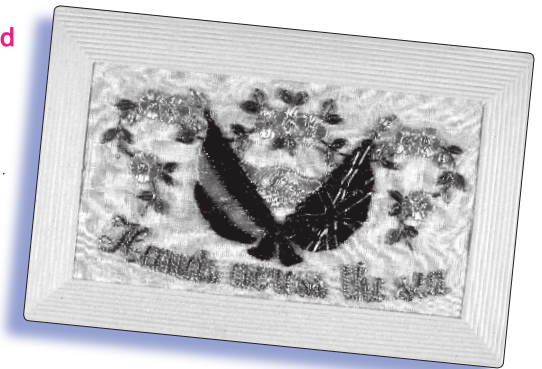
Soldiers in the First World War used these postcards to send short messages back home.

What will yours say?

IN SOCIETY GALLERY

Millions of men and women left home to serve during the First World War leaving their loved ones. Their families and friends at home wanted news about them so how did soldiers keep in contact?

Find the *Hands Across the Sea* postcard ►
(HINT: Look for the display called *Secrecy and censorship*)
What is it made of?



Who would a soldier buy a card like this for? What would they write on it?

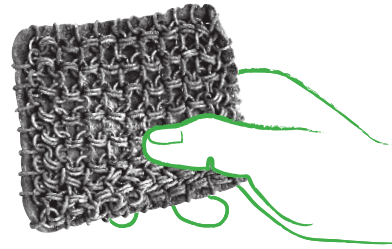
Now use the touch screen next to your left.

Find the picture of an official field postcard like the one on the left. What things were soldiers able to say using this card?

How would you have felt if you received this but nothing else? Discuss with a friend.

IN SOLDIER GALLERY

Every day, soldiers had to keep their equipment clean, cook and wash – sometimes in very difficult conditions.



Keeping clean and looking smart was really important. **Find the object on the right** ▶
(HINT: It's near the display of helmets at the back of the gallery.)

What is it called?

What was it used for?

Now go to the display about **Campaign life**. Lice were a big problem for soldiers in the First World War. They would get into their clothes and cause Trench Fever. **Can you find something that soldiers would use to protect against lice?**

SOLDIER'S T _ _ _ _ _ P _ _ _ _ _

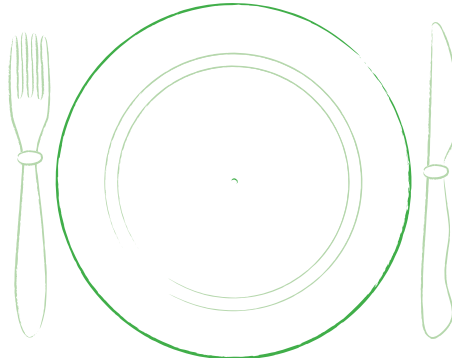
What other problems might soldiers have in the trenches?
Discuss with a friend.

Now go to your left and look at the display about soldiers' food.
Name two types of food that soldiers ate during the First World War below:

.....
.....

Do you think it would be tasty or healthy? Discuss with a friend.

Find the plates on the wall.
How much protein, fat and carbohydrates did soldiers eat every day in the First World War? Draw a pie chart showing this on the plate opposite:



IN ARMY GALLERY

Many different people worked together for Britain during the First World War. Men and women from all around the world served in different ways.

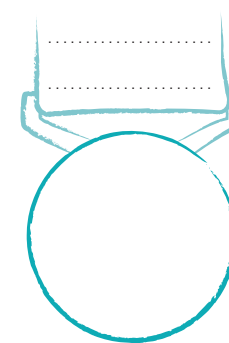
Every soldier who served throughout the First World War received three medals. **Why do you think medals are given to soldiers?**
Discuss with a friend.

Go to the **Women in the British Army** display at the back of the gallery.
Use the touch screen to spot the three medals given to soldiers. They were nicknamed 'Pip, Squeak and Wilfred'. **Draw the three medals below and add their proper names:**

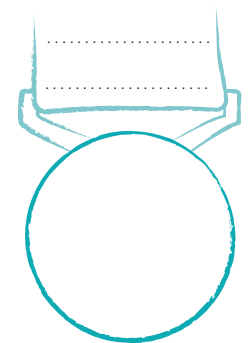
PIP:



SQUEAK:



WILFRED:



Now find this large medal in the display case ▶
What is it? Use the touch screen to find out.

.....
.....
.....

Now look to your left and find the painting of Subadar Khudadad Khan. He is wearing a special medal on a crimson ribbon called the Victoria Cross or VC. This is the highest award for bravery in the British Army. **Use the touch screen to find out how he earned his medal.**



IN BATTLE GALLERY

Soldiers fought all over the world during the First World War. Battlefields were dangerous places where soldiers risked their lives.

Many new weapons were used on the battlefield during the First World War. Walk through the gallery to the Total war section and look in the large case full of weapons.

Can you spot this strange-looking rifle? ➤

Use the touch screen to find out about it.

What is it called?

What was it for?



Poison gas was used during the First World War too.

**◀ Find this object. What is it?
(HINT: It's in the same case as the weapons).**

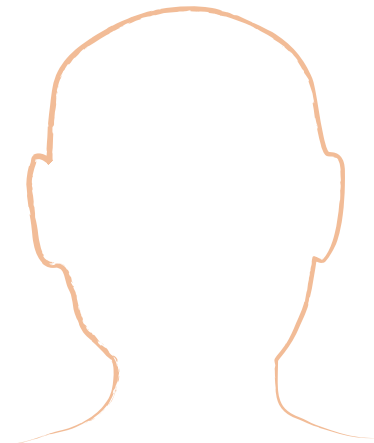
**How would you feel if you had to wear it?
Discuss with a friend.**

**Now find the display called A new weapon
(HINT: it's in the same room).**

Tanks were used in battle for the first time in 1916.

Can you spot something that tank crewmen would have worn during the First World War to protect their faces?

Draw a picture of it here:



IN INSIGHT GALLERY

Today, we use objects in museums to learn about the past. They can provide us with clues and evidence about the First World War.

Go to the display about Germany.

Can you find the First World War helmet? What is it called?

Draw a picture of it on the soldier below:



British soldiers collected thousands of things like this during the war and brought them home. Sometimes the museum doesn't really know the full story.

Can you imagine how this helmet found its way to the museum? Discuss with a friend.

You have now visited all five of the Museum galleries. There are still many more things to discover!